

ENVIRONMENTAL HEALTH & SAFETY SOLUTION (EHS)

Enterprise Governance Solution for Health & Safety Management



AT A GLANCE

- Track, log, and determine recordable cases as mandated by OSHA (Form 300)
- Help ensure safe working conditions for all employees, customers and contractors
- Provide reporting, tracking, classification and trending of illnesses, injuries and fatalities
- Drive continuous safety and EHS performance across multiple locations
- Provide visibility to the status of all logs, incidents and events

OVERVIEW

Providing employees, contractors and customers with a safe working environment is a major priority for any organization. Numerous industry regulations as well as government agencies such as the Occupational Safety and Health Administration (OSHA) have enacted specific rules, procedures and laws that must be followed in order to ensure compliance with safety measures in the workplace. To comply with these laws and regulations, organizations are required to track all recordable events relating to workplace illness, injury or death and provide an annual summary report of this information using specific, legal federal forms. Many organizations struggle to efficiently capture this information and lack the governance tools required to effectively manage, track and report workplace incidents as mandated by OSHA which in turn hampers their ability to identify proactive controls and procedures to avoid future incidents.

RSA ARCHER ENVIRONMENTAL HEALTH & SAFETY SOLUTION

The RSA Archer EHS solution enables organizations to comply with incident reporting standards for health and safety requirements as mandated by the Occupational Safety and Health Administration (OSHA). The solution provides organizations with an effective means to log and classify incidents and events, identify proactive controls and procedures to help prevent future incidents, track all associated damages, fines and penalties due to non-compliance events and provide an efficient mechanism for annual reporting of all events and information required within the OSHA Form 300/300A. This initial release of the Archer EHS solution focuses on the Health and Safety management aspects contained within the broader EHS ecosystem and provide organizations an effective way to easily integrate their Audit IT, and Incident Response teams into their broader enterprise governance program.

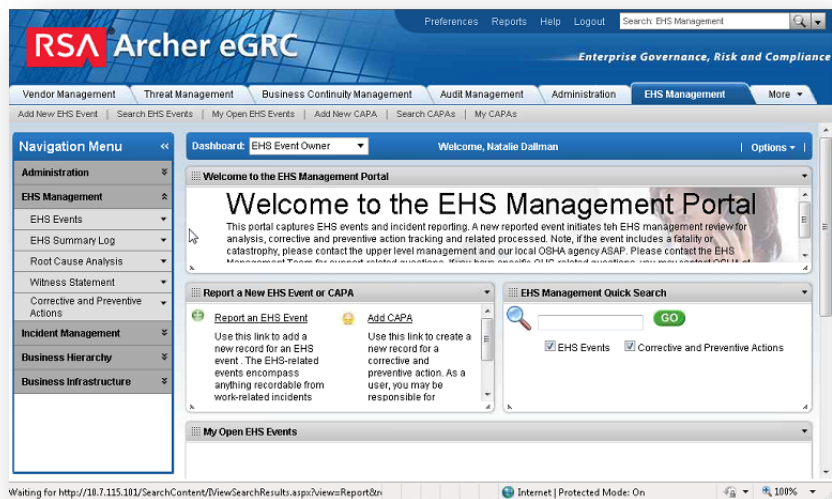
SOLUTION BENEFITS

Organizations must be able to track, investigate and manage all types of work-related incidents. Furthermore they must be able to assess risk in the workplace and develop and implement proactive measures that prevent injuries and illnesses from occurring initially. The RSA Archer Environmental Health & Safety solution enables organizations to accomplish these activities by delivering the following capabilities.

DATA SHEET

SOLUTION CAPABILITIES

- Comply with OSHA incident reporting standards via user-prompted responses to drive recordable events
- Provide visibility and reporting on incidents, events, ownership and statuses
- Drive quality and safety EHS performance across multiple locations and business areas
- Capture, investigate, assess and prevent all hazards, injuries, illnesses, near-misses, and property-damages with corrective and preventive actions
- Escalate incidents quickly and efficiently
- Help maintain a safe and secure work environment and reduce risk to people and property
- Perform root cause analyses for all events to proactively prevent recurrences
- Host all witness statements, investigations, and evidential information as it relates to EHS events to prevent or rebut potential penalties, fines, and fees



CONTACT US

To learn more about how EMC products, services, and solutions can help solve your business and IT challenges, [contact](#) your local representative or authorized reseller—or visit us at www.EMC.com/rsa.

EMC², EMC, the EMC logo, are registered trademarks or trademarks of EMC Corporation in the United States and other countries. VMware are registered trademarks or trademarks of VMware, Inc., in the United States and other jurisdictions. © Copyright 2012 EMC Corporation. All rights reserved. Published in the USA. 08/13 Data Sheet

EMC believes the information in this document is accurate as of its publication date. The information is subject to change without notice.

www.EMC.com/rsa

